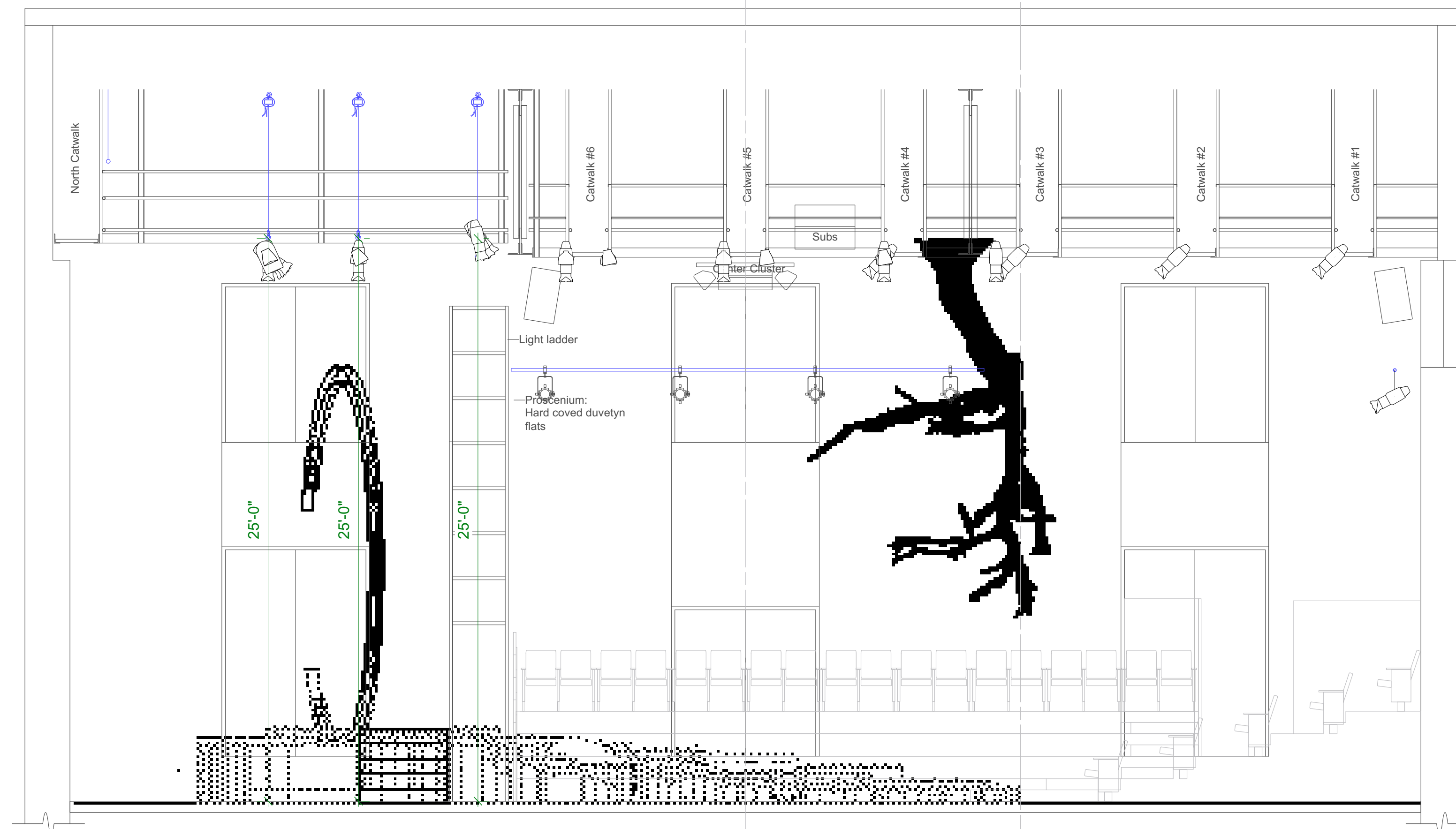


FRONT ELEVATION VIEW



SECTION VIEW
FACING STAGE LEFT

INSTRUMENT KEY

- ETC Source4 190sq
- ETC Source4 200sq
- ETC Source4 300sq
- ETC Source4 500sq
- Strand 6in Fies
- Altman PAR 64 MFL
- ETC GE Source4 PAR MCM (MFL)
- ETC ColorSource PAR Medium Oval
- ETC ColorSource PAR Wide Oval
- High End SolaSpot Pro CMF
- High End Systems Sola Wash LED 37
- Label Legend Key
- Accessory
- Unit Number

NOTES

- Instruments without dimension labels are to be hung 18" apart
- Fog machine position is still being discussed
- Equipment requests are pending approval
- See scenic drafting of LED neon tape

THE UNIVERSITY OF TEXAS AT AUSTIN
THEATRE & DANCE
 TEXAS
 300 E. 23RD STREET
 AUSTIN, TX 78712
 Oscar Brockett Theatre

PRESENTS

12 OPHELIAS

Playwright _____ Caridad Svich
 Director _____ Jess Shoemaker
 Scenic Design _____ Chris Conard
 Costume Design _____ Delena Bradley
 Sound Design _____ Carolina Perez
 Projection Design _____ Chris Conard

THIS DRAWING REPRESENTS VISUAL CONCEPTS AND CONSTRUCTION SUGGESTIONS ONLY. THE LIGHTING DESIGNER IS UNQUALIFIED TO DETERMINE THE ELECTRICAL OR STRUCTURAL APPROPRIATENESS OF THE DESIGN AND WILL NOT ASSUME RESPONSIBILITY FOR IMPROPER ENGINEERING, CONSTRUCTION, OR USE. ALL MATERIALS AND CONSTRUCTION MUST MEET THE MOST STRINGENT LOCAL SAFETY AND FIRE CODES.

Kendra S. Wiley
 Lighting Designer
 kendra.suzanne.wiley@gmail.com
 706-714-5590
 kendraswiley.com

SCALE:	1/4"=1'-0"	PLATE
DRAWN BY:	Kendra S. Wiley	
CREATED:	04-27-19	
REVISED:	08-12-19	2
FILE:	120 FINAL.vwx	OF 2

Section View